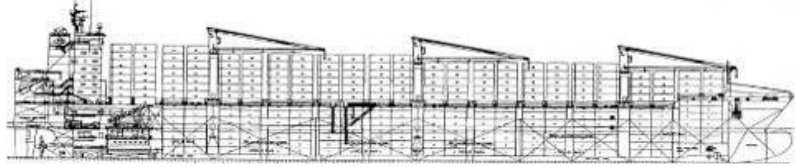




M/V ' TS Pusan ex Johannes S '



**S
H
I
P
S
-
P
A
R
T
I
C
U
L
A
R
S**

Call Sign	V 2 C R 9
Flag	Antigua & Barbuda
Port of Registry	S T. J O H N ' S
MMSI - No.	305 090 000
IMO - No.	9 376 141
Official - No.	4 3 2 0
GL - Register - No.	112 704
Keel layed	11, June 2007
Delivered	1. Feb. 08
Build in	Jiang Yin / China
GT	26 435
NT	12 990
Panama NT	21 983
Panama SIN	
Suez Canal GT	78 363,84
Suez Canal NT	74 555,36
Length overall	208,95 m / 685,5 ft
Length between perpendiculars	196,90 m / 646,1 ft
Breadth Moulded	29,80 m / 97,8 ft
Depth to Maindeck	16,40 m / 53,8 ft
Summer deadweight	34330,5 mts
Draft on Summer deadweight	11,60 m / 38,1 ft
design draft	10,10 m / 33,1 ft
deadweight on design draft	26772 mts
freeboard to Maindeck	4,832 m / 15,9 ft
fresh water allowance	0,222 m / 0,7 ft
light ship	12049,0 mts
propeller	right handed, 5 blade fixed, dia.:7000 mm
bow truster	CCP 1100 KW / 1475 HP
trust	16,5 ts
service speed on design draft	abt. 22,0 kn
reefer plugs	536 pc - 188 hold/348 deck
max fixed height keel - mast	52,50 m / 172,2 ft
Owners full style adress: Rudolf Schepers Schiffahrtsgesellschaft mbH & Co.KG M.S. "Johannes-S" Hermann - Ehlers Str. 5 b D - 26160 Bad Zwischenahn / Ofen / Germany Tel.: +49 - 441 - 408 10-0 Fax: +49 - 441 - 408 10-11 E-Mail: info@reederei-schepers.de	

Container intake:	
20' container on deck	1524
20' container in holds	984
20' container in TOTAL	2508
40' container on deck	716
+ 20' container	88
40' container in holds	478
+ 20' container in holds	28
40' container in TOTAL	1194
+ 20' container	116
Stackweights:	
20' container in holds	a 24 to max. 156 mts
40' container in holds	a 30 to max 180 mts
20' container on deck, Bay 01+03+05+07	66,5 mts
40' container on deck, 02 + 06	90 mts
20' container on deck*	80 mts
40' container on deck	100 mts
*based on lashing gap otherwise only 60 mto	
Cargo Holds Capacity	
Hold # 1	4701,6 cbm
Hold # 2	9798,1 cbm
Hold # 3	11227,5 cbm
Hold # 4	11772,8 cbm
Hold # 5	9986,4 cbm
Total :	47486,4 cbm
Tank Capacities	
HFO	2783,0 mts
MDO	245,7 mts
Luboil	117,4 mts
Fresh- and Feedwater	199,4 mts
Ballastwater	9781,4 mts
Ship's Cranes	
3 electric / hydraulic cranes / Maker: N M F	
max. lifting / outreach	45 mts / 23,0 m 36 mts / 29,1m
Main Engine	1 Sulzer
MCR	7 RT-FLEX 68 BD 21490 KW
Class Society : Germanischer Lloyd	
Class Engine : GL + MCE, Aut Class	
Hull : GL + 100 A5, E,	
Containership, IW-NAV-O RSD BWM Solas II-2, Reg. 54	
HFO cons./day on design draft	abt 88,0 mts
max lifeboat intake	30 persons
minimum safe - manning	15 persons
Charterers full style adress:	
TS Lines Ltd.	
14th Floor, No 88 Section 2,Nanking East Road	
104 Taipei / Taiwan R.O.C	
PIC: Mr.T.J. CHOW	
Phn: + 886 - 2 - 2575 6001	
Fax : + 886 - 2 - 2562 3738	
e-mail: vessel@tslines.com	