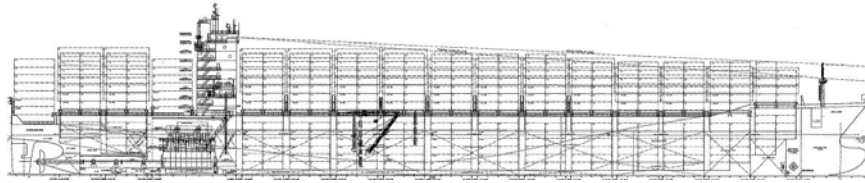




M/V ' CSAV LANALHUE '



**S
H
I
P
S
-
P
A
R
T
I
C
U
L
A
R
S**

Call Sign	V 2 E C 6
Flag	Antigua & Barbuda
Port of Registry	S T. J O H N 'S
MMSI - No.	305 385 000
IMO - No.	9 418 652
Official - No.	4 5 8 5
GL - Register - No.	113 063

Keel layed	28. Dez. 08
Delivered	8. Sep. 09
Build in	Jiangyin/China
GT	40 541
NT	24 472
Panama NT	33512
Panama SIN	600 503 652
Suez Canal GT	41602,77
Suez Canal NT	34435,59

Length overall	261,10 m / 856,6 ft
Length between perpendiculars	249,45 m / 818,34 ft
Breadth Moulded	32,25 m / 105,8 ft
Depth to Maindeck	16,38 m / 53,8 ft
Summer deadweight	50269 mto
Draft on Summer deadweight	12,60 m / 41,3 ft
design draft	11,00 m / 36,1 ft
deadweight on design draft	39241 mto
freeboard to Maindeck	3,796 m
fresh water allowance	0,240 m / 0,8 ft
light ship	17638,0 mts
propeller	right handed, 6 blade fixed, dia.:7750 mm
bow truster	1600 KW cpp
trust	22,0 ts
service speed on design draft	abt. 24,5kn
reefer plugs	698 pc - 486deck/212 Hold
max fixed height keel - mast	56,00 m / 165,8 ft

Managing owners full style adress:	
Reederei Rudolf Schepers GmbH & Co Kg	
Hermann - Ehlers Str. 5 b	
D - 26160 Bad Zwischenahn / Ofen / Germany	
Tel.: +49 - 441 - 408 10-0	
Fax: +49 - 441 - 408 10-11	
E-Mail: info@reederei-schepers.de	

Container intake:	
20' container on deck	2313
20' container in holds	1587
20' container in TOTAL	3900
+ 40' container	178
40' container on deck	1323
+ 20' container	12
40' container in holds	770
+ 20' container in holds	47
40' container in TOTAL	2093
+ 20' container	59

Stackweights:	
20' container in holds	168 mts
40' container in holds	210 mts
20' / 40' container on deck, Bay 01+03/02	60 / 90 mts
40' container on deck, 52 + 60	120 mts
20' container on deck	70 mts
40' container on deck	100 mts

Cargo Holds Capacity	
Hold # 1	5510,7 cbm
Hold # 2	9662,1 cbm
Hold # 3	13550,1 cbm
Hold # 4	15530,5 cbm
Hold # 5	14530,5 cbm
Hold # 6	13934,5 cbm
Hold # 7	6781,4 cbm
Total :	78499,7 cbm

Tank Capacities	
HFO	6084,5 mts
MDO	210,6 mts
Luboil	310,8 mts
Fresh- and Feedwater	459,6 mts
Ballastwater	11756,6 mts

Ship's Cranes	
2 electric / hydraulic store cranes / Maker:	
max. lifting / outreach	Port : 10 mto - 10 mtr Stb: 4 mto 10 mtr
Main Engine	1 x 8L 90 MC-C
MCR	CMD -MAN-B&W 36560 KW

Class Society :	Germanischer Lloyd
HFO cons./day on design draft	abt 150.0 mts
max lifeboat intake	30 persons
minimum safe - manning	17 persons

Charterers full style adress:	
Compania Sud Americana de Vapores S.A. (CSAV)	
Plaza Sotomayor 50	
2360171 Valparaiso / Chile	
PIC: Mr. Mario Guzman	
Phn: + 56-32-220 3407 Fax : + 56-32-223 4457	
e-mail: mario.guzman@csav.com	